



Manufactured according to OIML R60 standards

Capacity from 5000 kg to 20000 kg



- 17-4 PH STAINLESS STEEL
- HOLES FOR STANDARD SHACKLES
- COMBINED ERROR $\leq \pm 0.03\%$
- PROTECTION CLASS IP68

CAPACITY	kg					NET WEIGHT OF LOAD CELL (kg)	CODE
5000		•	•	•		4.5	TAL5000
10000		•	•	•		4.6	TAL10000
20000		•	•	•		6.6	TAL20000

ON REQUEST

CERTIFICATIONS

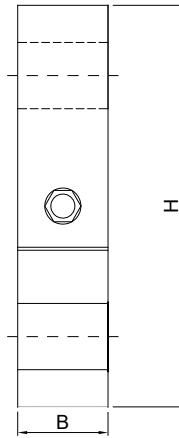
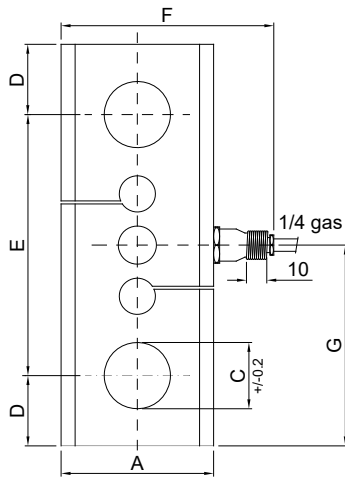
CERTIFICATIONS ON REQUEST

	Calibration report (ACCREDIA LAT traceability)
	ATEX II 1GD (zone 0-1-2-20-21-22)
	IECEx (zone 0-1-2-20-21-22)
	Complies with the Eurasian Custom Union standards
	Complies with the Eurasian Custom Union standards for use in potentially explosive atmospheres

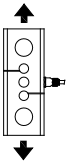
OPTIONS ON REQUEST

	DESCRIPTION
	Two redundant strain gauges Wheatstone bridges (350 Ω) with two output cables; for dual safety systems

DIMENSIONS (mm)



	kg 5000	kg 10000	kg 20000
A	76	82	
B	45	54	
C	33	52	
D	35	47	
E	130	166	
F	106	112	
G	100	130	
H	200	260	

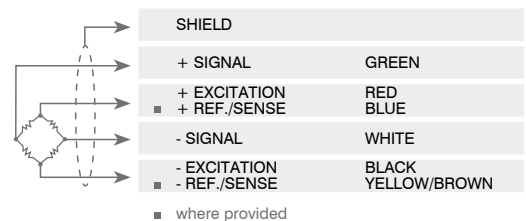


TECHNICAL FEATURES

Material	AISI 420 stainless steel		
Nominal load (E max)	5000 - 10000 - 20000 kg		
Combined error	≤ ±0.03%		
Protection class	IP68		
Rated output	2 mV/V ±0.1%	Input resistance	350 Ω ±5
Temperature effect on zero	0.005% °C	Output resistance	350 Ω ±5
Temperature effect on span	0.003% °C	Zero balance	±1%
Compensated temperature range	-10 °C / +50 °C	Insulation resistance	>5000 MΩ
Operating temperature range	-20 °C / +70 °C	Safe overload (% of full scale)	150%
Creep at nominal load in 30 minutes	0.03%	Ultimate overload (% of full scale)	300%
Max supply voltage without damage	15 V	Deflection at nominal load	0.3 mm

ELECTRICAL CONNECTIONS

Cable length	10 m
Cable diameter	5 mm
Cores	4 x 0.25 mm ² /6 x 0.14 mm ²



The Company reserves the right to make changes to the technical data, drawings and images without notice.